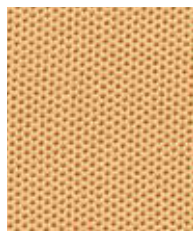


SPRINT (1)

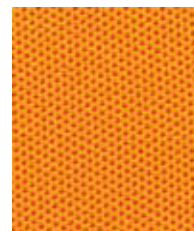
STOFFMUSTERKARTE



Pace PS005



Lane PS006



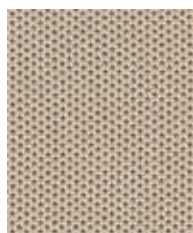
Gold PS015



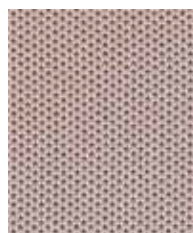
Plunge PS016



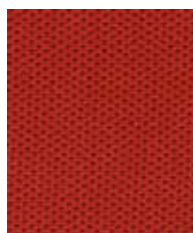
Ready PS018



Hurdle PS001



Relay PS002



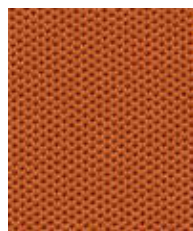
Start PS010



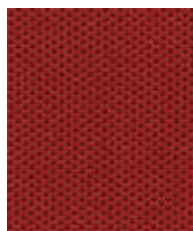
Runner PS017



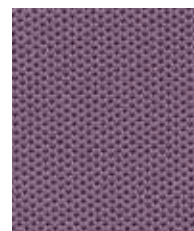
Baton PS003



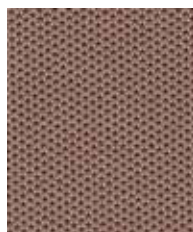
Track PS007



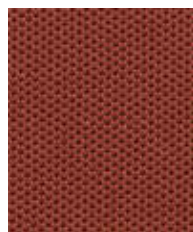
Finish PS011



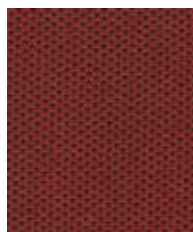
Steady PS019



Metres PS009



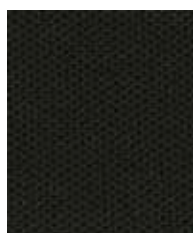
Bronze PS008



Overtake PS012



Go PS020



Chase PS004



Stopwatch PS013



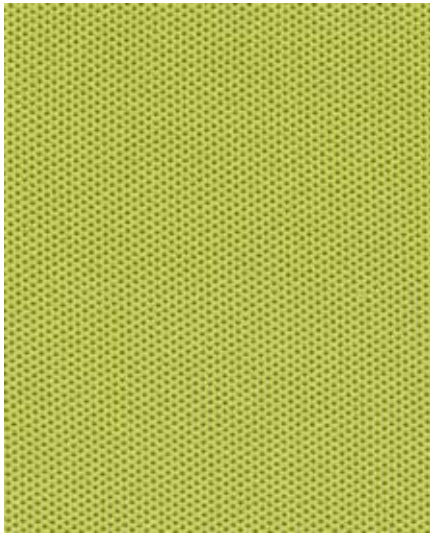
Distance PS014



Challenger PS021

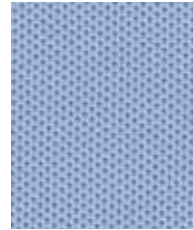
SPRINT (2)

STOFFMUSTERKARTE



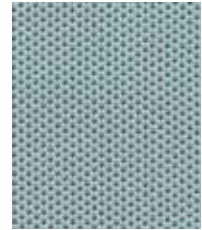
Energy

PS026



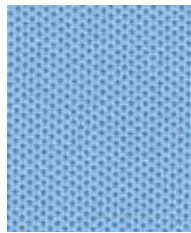
Winner

PS035



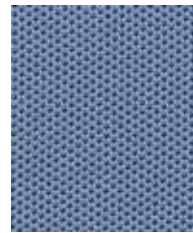
Nutrition

PS039



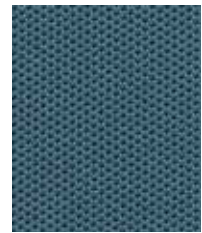
Stretch

PS031



Leap

PS036



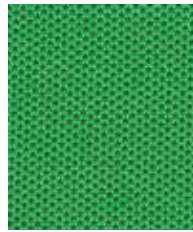
Competitor

PS040



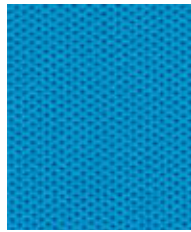
Train

PS027



Bolt

PS022



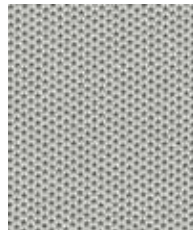
Victory

PS032



Stride

PS023



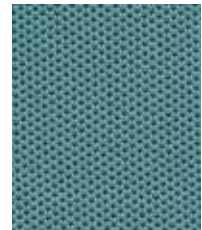
Silver

PS028



Focus

PS037



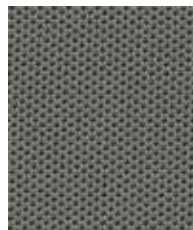
Champion

PS041



Stamina

PS024



Block

PS029



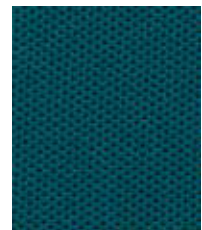
Line

PS033



Heat

PS038



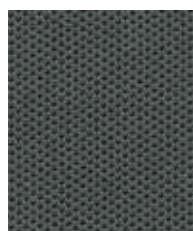
Bound

PS042



Exercise

PS025



Speed

PS030



Opponent

PS034

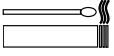


Final

PS043

SPRINT

STOFFMUSTERKARTE



UK

Composition	100% Polyester
Width	140cm minimum
Weight	325g/m ² ±5% (455g/lin.m. ±5%)
*Abrasion Resistance	5 year guarantee / 200,000 Martindale cycles(full details available)
Flammability	BS EN 1021 - 1:2006 (cigarette), BS EN 1021 - 2:2006 (match), BS 7176 : 2007 Low Hazard <i>Note: Flammability performance is dependent on foam used.</i>
*Light Fastness	6 (ISO 105 - B02:1999)
*Fastness to Rubbing	Wet: 4 Dry: 4 (ISO 105 - X12:2002)
Maintenance	Washable to 60°C. Vacuum regularly. Wipe clean with a damp cloth or shampoo using proprietary upholstery shampoo.
Colour Matching	Batch to batch variations in shade may occur within commercial tolerances.

Please be aware that Sprint is a stretch fabric. When cutting, please ensure that the fabric is not under any kind of tension, in order to guarantee the size and symmetry of cut patterns.

*Tested in accordance with BS 2543:1995/2004. Further information available on request.
Please note that ultimate seam performance is dependent on seam construction, and needle and thread type. We recommend that appropriate sewing advice be taken. **Note:** We reserve the right to alter technical specifications without notice.
The Unregistered Design Rights and the Copyright in all designs are the exclusive property of Camira Fabrics Limited.

F

Composition	100% Polyester
Largeur	140cm minimum
Poids	325g/m ² ±5% (455g/m.l. ±5%)
*Résistance à l'abrasion	200,000 Martindale tours / Garantie de durabilité de 10 ans (renseignements complémentaires disponibles)
Flammabilité	EN 1021 - 1:2006 (cigarette), EN 1021 - 2:2006 (allumette), BS 7176:2007 Low Hazard <i>Note: Réaction au feu dépend de la mousse utilisée.</i>
*Solidité à la lumière	6 (ISO 105 - B02:1999)
*Solidité au Frottement	Mouillé: 4 Sec: 4 (ISO 105 - X12:2002)
Nettoyage	Lavable jusqu'à 60°C. Aspirer régulièrement. Essuyer avec une étoffe humide ou nettoyer à l'aide d'un produit approprié pour tissus d'ameublement.

Standardisation des coloris/Variations de coloris d'un bain à un autre peuvent se manifester.
S'il-vous-plait, soyez vigilant! Sprint est un tissu stretch. Au coupage, ne mettez pas le tissu sous aucune forme de pression afin de garantir la symétrie des longueurs et des formes découpées.
*Testé selon la norme BS 2543:1995/2004. De plus amples informations sont disponibles sur demande. Veuillez noter que le glissement de la couture sous tension dépend de la structure de la couture, de l'aiguille et du fil. Nous recommandons de prendre conseil au près d'un professionnel. **Veuillez noter** que nous réservons le droit de modifier les spécifications techniques sans préavis. Les droits non-déposés sur les designs ainsi que les droits de copie sont la propriété exclusive de Camira Fabrics Limited.

I

Composizione	100% Poliestere
Altezza	140cm minimo
Peso	325g/m ² ±5% (455g/lin.m. ±5%)
*Resistenza all'abrasione	200,000 Cicli Martindale / Garanzia di 10 anni (dettagli disponibili)
Resistenza al fuoco	BS EN 1021 - 1:2006 (Sigaretta), BS EN 1021 - 2:2006 (Cerino), BS 7176 : 2007 Low Hazard <i>Nota: Il grado di resistenza al fuoco dipende dal tipo di schiuma utilizzata</i>
*Solidità alla luce	6 (ISO 105 - B02:1999)
*Resistenza allo sfregamento	Umido: 4 Secco: 4 (ISO 105 - X12:2002)
Manutenzione	Lavabile a 60°C. Regularmente con aspirapolvere. Strofinare leggermente con panno umido. Con uso di detergente neutro per tessuti.
Costanza del colore	Sono possibili leggere variazioni.

Il tessuto Sprint è un tessuto stretch. Durante il taglio dei campioni per le carte colori, assicurarsi che non sia sottoposto a nessuna tensione, in modo che questi ultimi siano della dimensione corretta.

*Ha superato il test BS 2543:1995/2004. Ulteriori informazioni disponibili su richiesta.
La resistenza della cucitura dipende dal tipo di cucitura e dall'ago e dal filo usati. Si suggerisce di seguire istruzioni di un tecnico. **Nota:** Ci riserviamo il diritto di modificare le specifiche tecniche senza preavviso.
I diritti su tutti i disegni non ancora registrati e quelli coperti da Copyright sono proprietà esclusiva di Camira Fabrics Limited.

D

Zusammensetzung	100% Polyester
Breite	140cm minimum
Gewicht	325g/m ² ±5% (455g/ld.M.±5%)
*Scheuerfestigkeit	5 Jahre Garantie / 200,000 Martindale Scheuertouren (Details auf Anfrage)
Feuersicherung	EN 1021 - 1 : 2006 (Zigarettest), EN 1021 - 2 : 2006 (Streichholztest) BS 7176:2007 Low Hazard, Bemerkung: Schwerentflammbarkeit hängt von verwendetem Schaum ab.
*Lichtechtheit	6 (ISO 105 - B02:1999)
*Reibechetheit	Nass: 4 Trocken: 4 (ISO 105 - X12:2002)
Reinigung	Waschbar bis 60°C. Regelmässig staubsaugen. Dazu mit einem feuchten
Farbabweichungen	Tuch abwischen, oder mit einem speziellen Polsterschaum behandeln. Handelsübliche Farbabweichungen vorbehalten

Bei Sprint handelt es sich um einen dehnbaren Stoff. Um die Größe und Symmetrie der Zuschnitte zu garantieren, stellen Sie bitte sicher, daß der Stoff beim Zuschneiden nicht unter Spannung steht.
* Wurde nach BS 2543: 2004 getestet. Weitere Informationen erhalten Sie auf Nachfrage.
Eine optimale Nahtausreissfestigkeit hängt von der Nahtfahne, der verwendeten Nadel und des Fadens ab. Wir empfehlen daher Nähversuche durchzuführen. **Anmerkung:** Wir behalten uns die Änderungen technischer Spezifikationen vor. Die registrierten und nicht registrierten Urheberrechte an den Dessinierungen sind ausschließliches Eigentum der Camira Fabrics Limited.

DK

Materiale	100% Polyester
Bredde	140cm minimum
Vægt	325g/m ² ±5% (455g/lin.m. ±5%)
*Slidstyrke	200,000 Martindale slidebevægelser / 10 års garanti (udførlig beskrivelse af garantien kan rekvireres)
Flammesikring	EN 1021 - 1:2006 (cigarettest), EN 1021 - 2:2006 (tændstiktest) BS 7176:2007 Low Hazard <i>Bemærk: Flammesikkerheden er afhængig af anvendt skumtype</i>
*Lysægthed	6 (ISO 105 - B02:1999)
*Gnidægthed	Våd: 4 Tør: 4 (ISO 105 - X12:2002)
Rengjøring	Vaskbar ved 60°C. Stovsugs regelmæssigt. Alternativt rengøring med en hårdt opredet klud eller skumrensning ved brug af en anerkendt møbelshampoo.
Farvedifferencer	Farvedifferencer indenfor kommercielle tolerancegrænser kan forekomme fra serie til serie.

Bemærk venligst at Sprint er et strækstof. For at sikre den rette størrelse og symmetri er det vigtigt, at stoffet ikke udsættes for stræk under klipning/udskæring.
* Testet i henhold til BS2543:1995/2004. Yderligere information kan fås på forespørgsel.
Vær opmærksom på, at optimal smøgling er afhængig af søm-, nål- og trådtype. Vi anbefaler, at du følger relevante sy-instruktioner. **Bemærk:** Vi forbeholder os retten til at ændre tekniske specifikationer uden varsel.
De uregistrerede designrettigheder og ophavsretten til alle designs tilhører ubetinget Camira Fabrics Limited.

ES

Composición	100% Poliéster
Ancho	140cm mínimo
Peso	325g/m ² ±5% (455g/lin.m. ±5%)
*Resistencia a la abrasión	200,000 Martindale ciclos / Garantía de uso 10 años (más información disponible bajo consulta)
Inflamabilidad	EN 1021 - 1:2006 (cigarrillo), EN 1021 - 2:2006 (cerilla), BS 7176:2007 Low Hazard <i>Condiciones ignífugas dependientes del tipo de foam utilizado</i>
*Solidez a la luz	6 (ISO 105 - B02:1999)
*Solidez al rozamiento	Húmedo: 4 Seco: 4 (ISO 105 - X12:2002)
Maintenance	Lavable hasta 60°C. Limpiar con aspiradora frecuentemente. Bien lavar con un paño húmedo o con un champú apropiado para tapicería.
Colour Matching	Cada lote puede tener pequeñas variaciones en el tono dentro de las tolerancias comercialmente aceptadas.

Por favor sea consciente de que Sprint es una tela elástica. Cuando corte la tela, asegúrese que la tela no estará bajo ninguna tensión para garantizar el tamaño y la simetría de los diseños cortados.
* Pruebas realizadas según la norma BS 2543:1995/2004. Más información disponible bajo consulta.
El deslizamiento de costura depende de su construcción así como el tipo de aguja e hilo empleados. Se recomienda que pida consejos apropiados para la costura. Se reserva el derecho de modificar las especificaciones técnicas sin previo aviso.
Los derechos sobre dibujos no registrados y los derechos de autor sobre todos los dibujos son propiedad exclusiva de Camira Fabrics Limited.